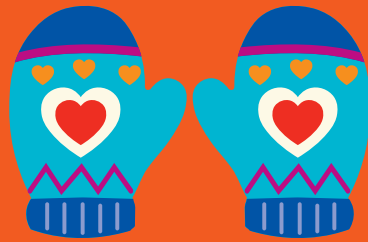


# WARM HANDS



# WARM HEARTS

Join the **MASSACHUSETTS MEDICAL SOCIETY ALLIANCE** in supporting the **FRIENDS OF BOSTON'S HOMELESS** challenge to help reduce the danger to those on the streets this winter through the **WARM HANDS WARM HEARTS WINTER APPAREL DRIVE**.

We all put on gloves, hats, scarves, and a warm pair of socks every winter morning with hardly a thought, but for the homeless these items are often a luxury. By participating in Warm Hands Warm Hearts, you will not only help keep our community's neediest, most vulnerable citizens warm and safe this winter, but you will also help maintain their dignity and comfort during this most difficult time of year.

It's a simple and inexpensive way to make a lasting impact for the homeless women and men in our community.

Please Consider Donating at  
Least **ONE NEW** Winter Hat, Scarf,  
or Pair of Gloves, Mittens, or Socks.

**A COLLECTION BASKET WILL BE  
LOCATED AT THE MMS ALLIANCE  
EXHIBIT DURING THE INTERIM  
MEETING ON DECEMBER 6, 2019.**



MASSACHUSETTS  
MEDICAL SOCIETY  
ALLIANCE

*Making a Difference*



*Friends of Boston's Homeless*

